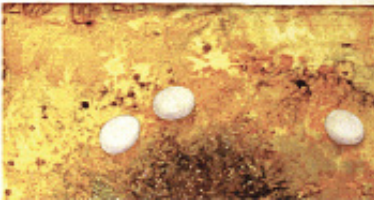


FIRE PLANS FOR ♀ AND ♂



QUESTIONS



# Having a gender lens in fire planning will increase community preparedness, survival and resilience

In the event of a Code Red day, where will you be? And your partner?<sup>[1]</sup> Where will the kids be?

What do you plan to be doing on a Code Red day?

*If you're thinking, 'I'm a man so I should stay and defend property' or 'I'm a woman, so I should leave with the children/others/alone':*

- ◆ What do you think is **behind each of your decisions?**
- ◆ In your case as a couple, and a family, **does it make sense** for you **(the man) to stay and try to defend property?** Does it make sense for you **(the woman) to try to escape?**
- ◆ If the plan is to leave early, **what is early?**
- ◆ Will you **(the woman) be happy to drive away leaving your partner alone** to defend the house on a Code Red day?
- ◆ Is **trying to persuade** him to leave with you **likely to delay** your leaving?
- ◆ **What's the worst that could happen**, if you follow your original plan (of him staying, her leaving)?
- ◆ Do you know that **over 40% of those who die in bushfires are female?**
- ◆ Does it still seem like the **best option?**

See Postcard 2: 'The Facts'

1. These postcards focus on heterosexual couples and fire plans, recognising the constraints on women's autonomy.

